

National Grid

List Price

Nema 1 & 3R Current Transformer Cabinets		
800 amps	CTN-800R <small>36" H x 36" W x 12" D</small>	\$ 1,100.00
1200 amps	CTN-1200R <small>48" H x 50" W x 12" D</small>	\$ 1,400.00
1600 amps	CTN-1600SWR	\$ 5,800.00
2000 amps	"Consult Sales Office"	
2500 amps	"Consult Sales Office"	
3000 amps	"Consult Sales Office"	
4000 amps	"Consult Sales Office"	

P.T. Cabinets		
Nema 1	EC-PT	\$ 400.00
Nema 3R	EC-PTR	\$ 450.00

Metering Cabinet		
Small 3R	EC-SMC	\$ 1,200.00
Large 3R	EC-LMC	\$ 2,200.00

Consult Sales Office For:

Custom cabinets
 Stainless Steel
 Custom Pull Boxes
 Hardware
 High Voltage Metering
 P.T. Cabinets
 Utility Switchboards

National Grid

NEMA 1 DETAIL CABINET/TERMINATION

400-800 Amps	DCT-800	\$2,500
1000 Amps	DCT-1000	\$3,500
1200 Amps	DCT-1200	\$4,200
1600 Amps	DCT-1600	\$4,800
2000 Amps	DCT-2000	\$5,300
3000 Amps	DCT-3000	\$5,600
4000 Amps	DCT-4000	\$6,000

NEMA 3R DETAIL CABINET/TERMINATION

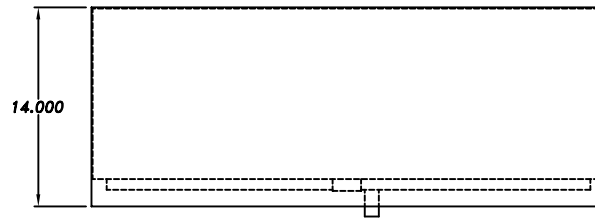
400-800 Amps	DCT-800R	\$3,200
1000 Amps	DCT-1000R	\$4,000
1200 Amps	DCT-1200R	\$4,700
1600 Amps	DCT-1600R	\$5,200
2000 Amps	DCT-2000R	\$5,700
3000 Amps	DCT-3000R	\$5,900
4000 Amps	DCT-4000R	\$6,400

Drawings located at end of Catalog

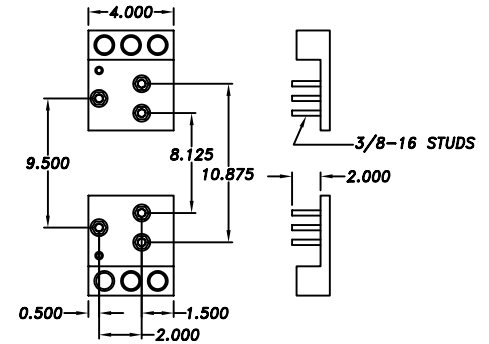
CATALOG# - CTN-800 & CTN-800R

GENERAL NOTES

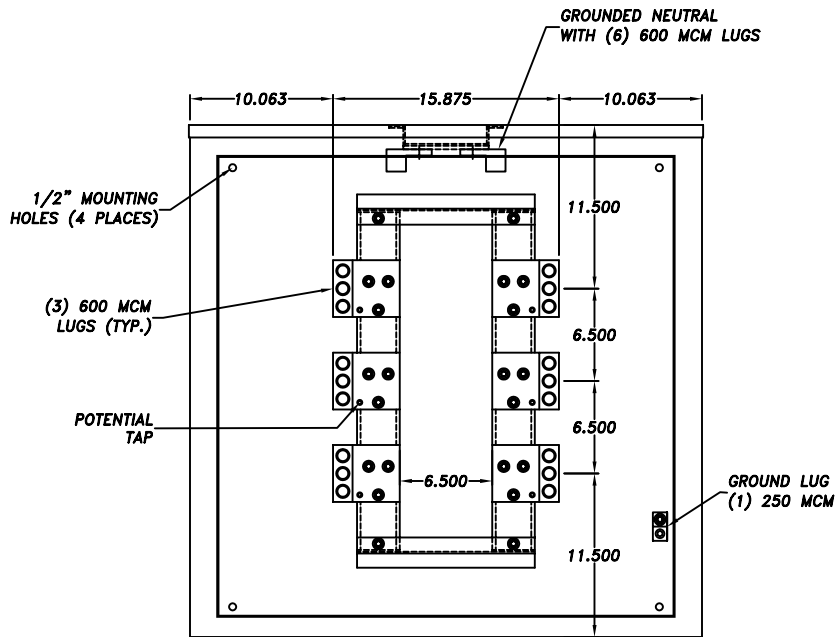
1. NEMA 1 / NEMA 3R CONSTRUCTION, WALL MOUNTED.
2. MATERIAL: CODE GA GALVANEAL STEEL PAINTED GRAY.
2. DESIGNED FOR FRONT ACCESS ONLY.



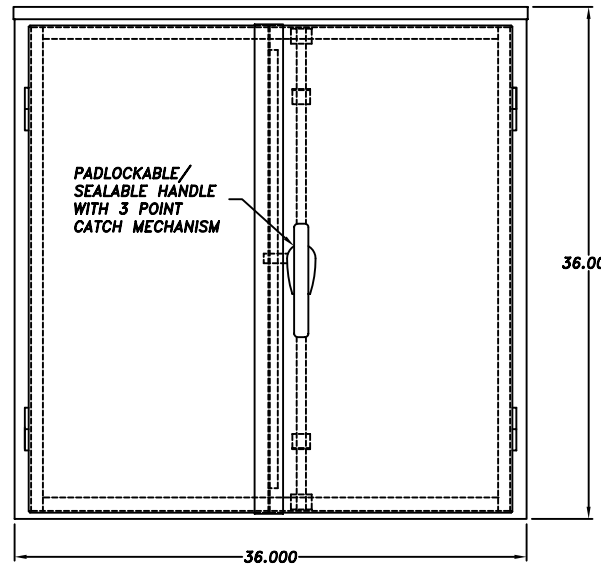
TOP VIEW



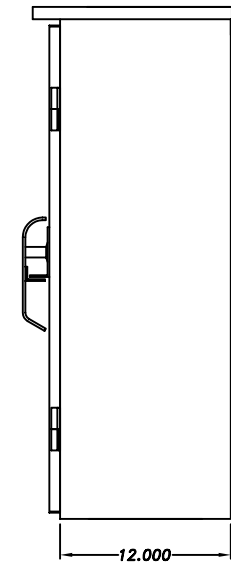
BUS BAR DRILLING DETAIL



FRONT VIEW WITHOUT DOORS



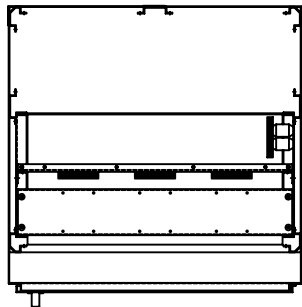
FRONT VIEW WITH DOORS



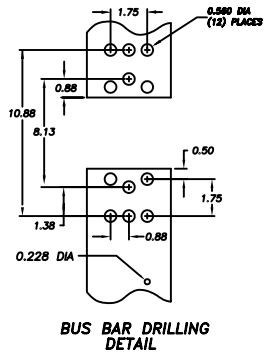
SIDE VIEW

AMPS	VOLTS	CATALOG #
400/800 INDOOR	120/208 V	CTN 800
400/800 OUTDOOR	120/208 V	CTN 800R

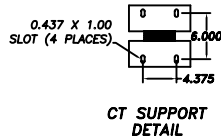
NATIONAL GRID UTILITY C/T CABINET				DWG. REV.	BY	DATE	DESCRIPTION
INDOOR/OUTDOOR CURRENT TRANSFORMER 400 - 800A, 600V MAX.							
DRAWN	PJB	03-12-03	EAST COAST PANELBOARD, INC. A DIVISION OF EAST COAST POWER SYSTEMS 3 CASS STREET - KEYPORT, NEW JERSEY 07735	DWG. SIZE	B	SCALE	1:1
CHECKED				DWG. REV.			SHEET 1 OF 1
APPROVED				DWG. NO.	A-01328		



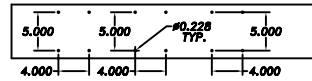
SECTION A-A



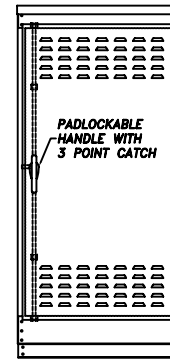
BUS BAR DRILLING DETAIL



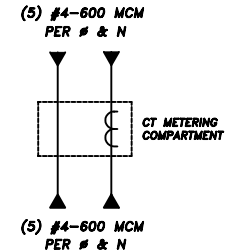
CT SUPPORT DETAIL



POTENTIAL XFMR MTG. PAN DETAIL (480 VAC SYSTEMS ONLY)



FRONT VIEW



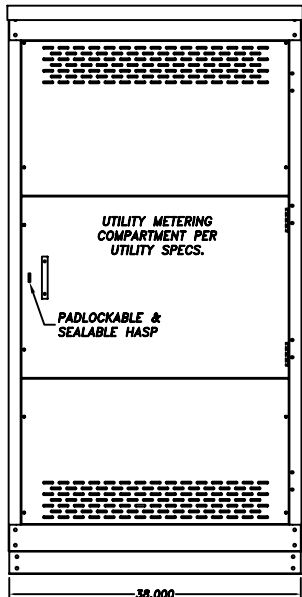
ONE-LINE DIAGRAM

GENERAL NOTES:

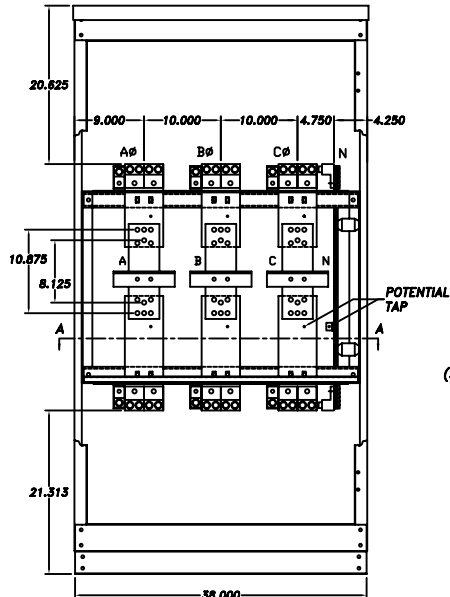
1. ALL DIMENSIONS ARE MINIMUM EXCEPT THOSE FOR C/T MOUNTINGS.
2. THIS DESIGN IS APPLICABLE TO HOT AND COLD SEQUENCE METERING.
3. THE C/T COMPARTMENT SHALL BE COMPLETELY ISOLATED FROM THE REMAINDER OF THE SWITCHBOARD BY MEANS OF BARRIERS WITH PROVISIONS FOR UTILITY COMPANY SEALS.
4. FRONT DOOR IS SUPPLIED WITH SEALABLE SCREWS AND PADLOCK PROVISIONS.
5. ALL SIDE, REAR AND FRONT COVERS THAT PROVIDE ACCESS TO UN-METERED BUS SHALL HAVE PROVISIONS FOR UTILITY COMPANY SEALS.

SPECIFICATIONS

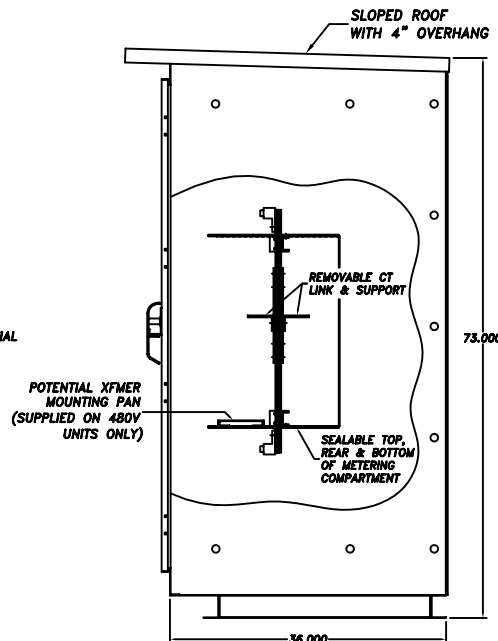
1. SYSTEM RATING:
VOLTAGE: 600 VAC (MAX), 3#/4W
AMPS: 1600A
2. ALL BUS IS:
 ALUM @ 750A SQ. IN.
 COPPER @ 1000A SQ. IN.
4. APPLICABLE LABELS:
 U.L. 891 DEADFRONT SWITCHBOARD.
 SUITABLE FOR USE AS SERVICE EQUIPMENT.



FRONT VIEW WITH DOOR REMOVED

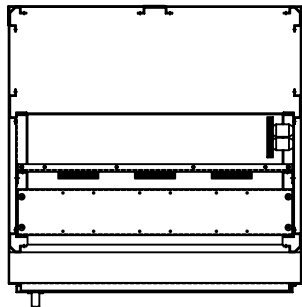


FRONT VIEW WITH DEADFRONT REMOVED

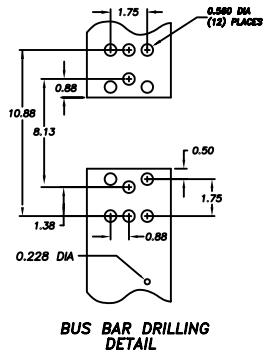


RIGHT SIDE VIEW

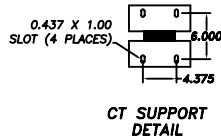
CTN-1600SWR					
NEMA 3R ENCLOSURE					
UTILITY DRAWING ELEVATION, PLAN VIEW AND ONE-LINE DIAGRAM					
DWG. REV.	BY	DATE	DESCRIPTION		
DWG. SIZE	B	SCALE	1 : 1	DWG. REV.	SHEET 1 OF 1
DRAWN	PJB	02-24-09	EAST COAST PANELBOARD, INC. 3 CARR STREET, NEW JERSEY 07730		
CHECKED			PROPERTY OF EAST COAST PANELBOARD, INC. USE PERMITTED FOR OUR WORK ONLY		
APPROVED			CATALOG NO. CTN-1600SWR		



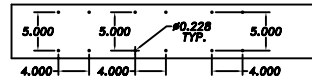
SECTION A-A



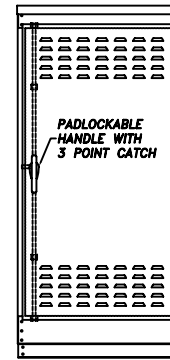
BUS BAR DRILLING DETAIL



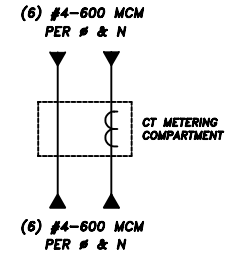
CT SUPPORT DETAIL



POTENTIAL XFMR MTG. PAN DETAIL (480 VAC SYSTEMS ONLY)



FRONT VIEW



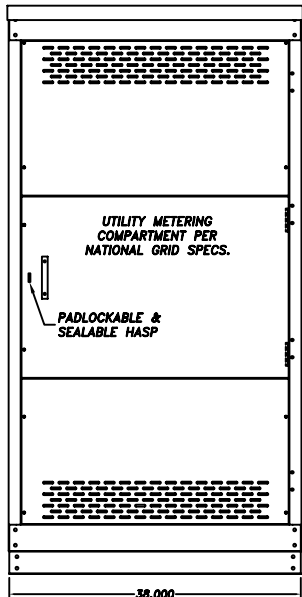
ONE-LINE DIAGRAM

GENERAL NOTES:

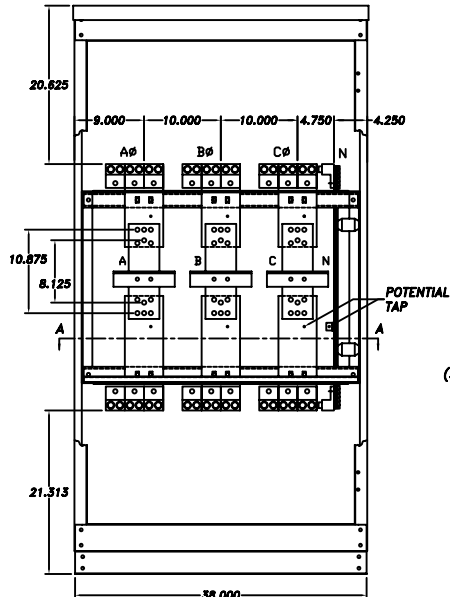
1. ALL DIMENSIONS ARE MINIMUM EXCEPT THOSE FOR C/T MOUNTINGS.
2. THIS DESIGN IS APPLICABLE TO HOT AND COLD SEQUENCE METERING.
3. THE C/T COMPARTMENT SHALL BE COMPLETELY ISOLATED FROM THE REMAINDER OF THE SWITCHBOARD BY MEANS OF BARRIERS WITH PROVISIONS FOR UTILITY COMPANY SEALS.
4. FRONT DOOR IS SUPPLIED WITH SEALABLE SCREWS AND PADLOCK PROVISIONS.
5. ALL SIDE, REAR AND FRONT COVERS THAT PROVIDE ACCESS TO UN-METERED BUS SHALL HAVE PROVISIONS FOR UTILITY COMPANY SEALS.

SPECIFICATIONS

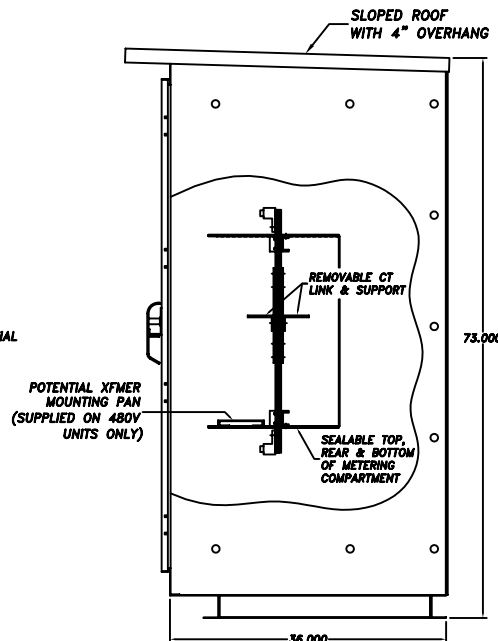
1. SYSTEM RATING:
VOLTAGE: 600 VAC (MAX), 3 ϕ /4W
AMPS: 2000A
2. ALL BUS IS:
 ALUM ϕ 750A SQ. IN.
 COPPER ϕ 1000A SQ. IN.
4. APPLICABLE LABELS:
 U.L. 891 DEADFRONT SWITCHBOARD.
 SUITABLE FOR USE AS SERVICE EQUIPMENT.



FRONT VIEW WITH DOOR REMOVED



FRONT VIEW WITH DEADFRONT REMOVED



RIGHT SIDE VIEW

CTN-2000SWR, NATIONAL GRID UTILITY					
NEMA 3R ENCLOSURE					
UTILITY DRAWING ELEVATION, PLAN VIEW AND ONE-LINE DIAGRAM					
DWG. REV.	BY	DATE	DESCRIPTION		
DWG. SIZE	B	SCALE	1 : 1	DWG. REV.	SHEET 1 OF 1
DRAWN	PJB	03-01-07	EAST COAST PANELBOARD, INC. 3 CARR STREET, NEW JERSEY 07730		
CHECKED			PROPERTY OF EAST COAST PANELBOARD, INC. USE PERMITTED FOR OUR WORK ONLY		
APPROVED			CATALOG NO. CTN-2000SWR		